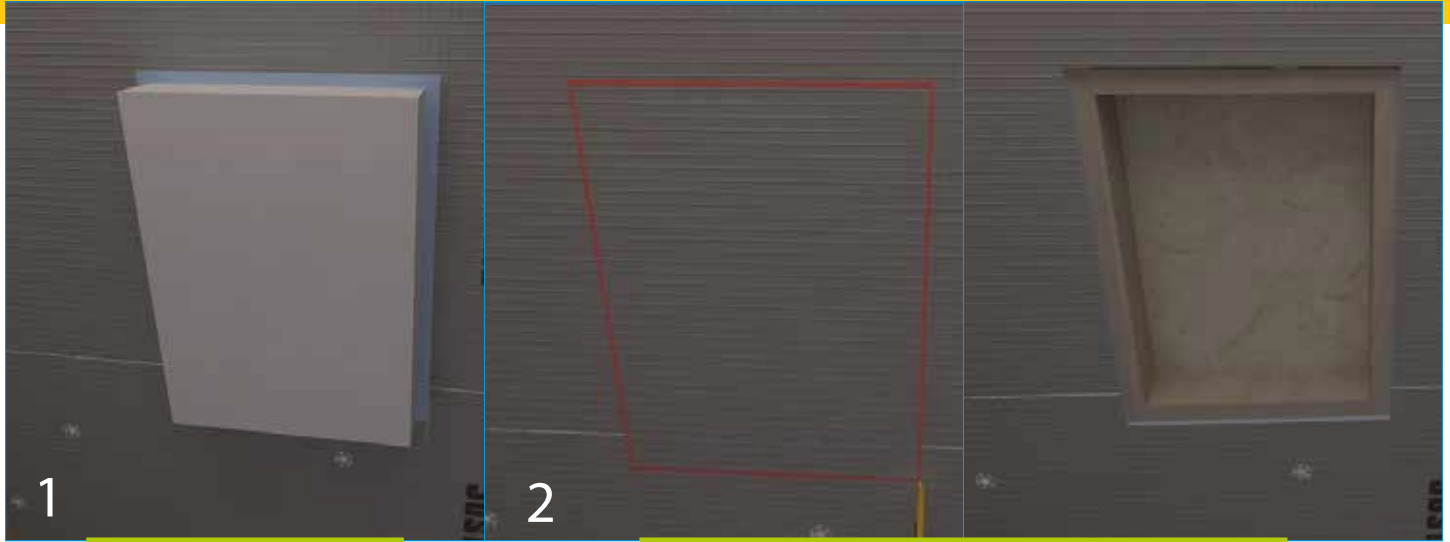
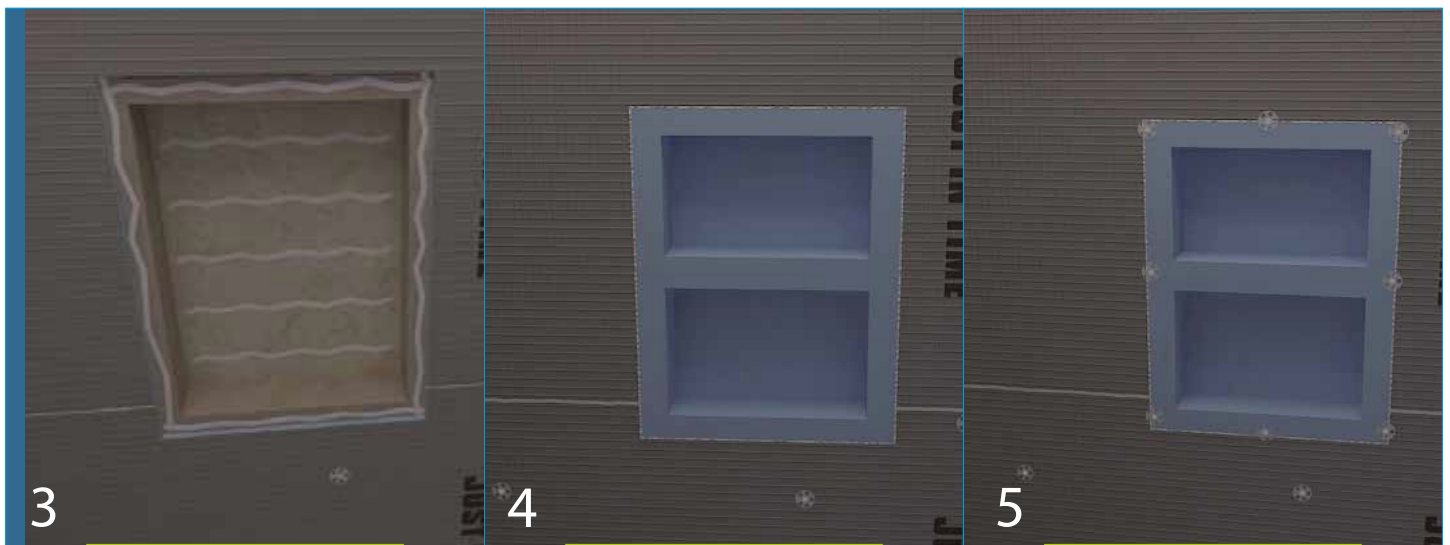


Tile Board Shower Niche Installation - 10mm



1. Determine desired height of niche and draw level line on wall substrate layer (ideally 12mm for ease).

2. Cut along line and remove top substrate layer. If necessary, install horizontal cross bracing to support Niche.



3. Use waterproof Sealant to adhere Niche to studs.

4. Seal joints between Niche and backer board with waterproof Sealant .

5. Secure to stud work with screws & washers as per tile board.