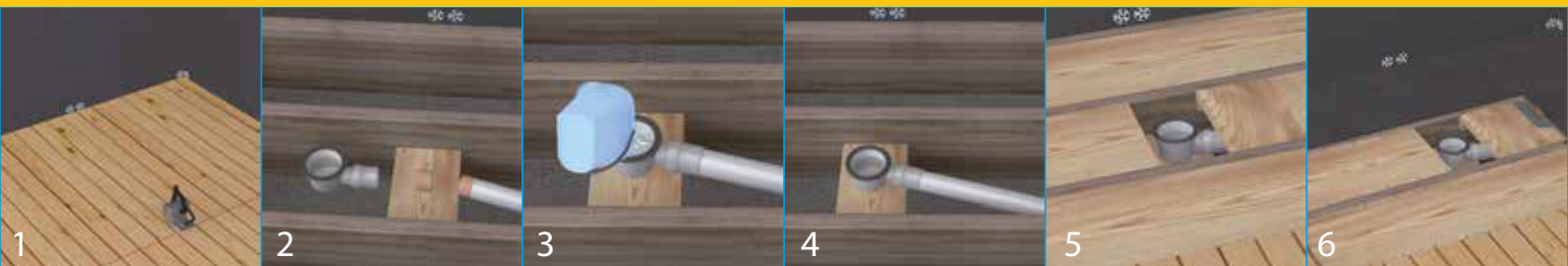
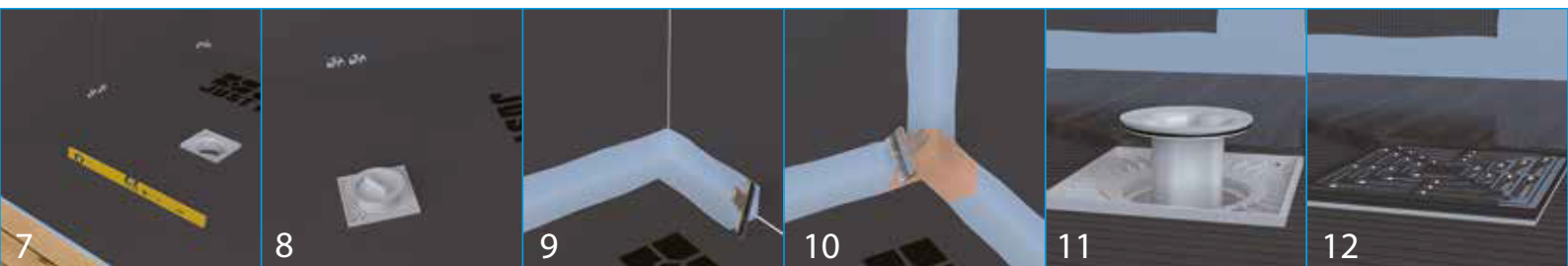




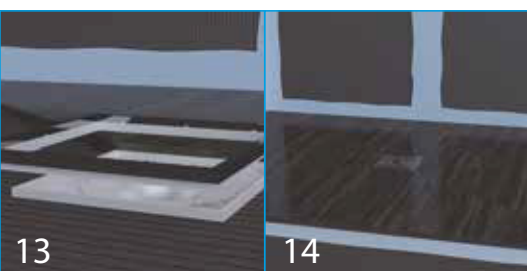
## Tile Backer Board Shower Tray - Universal Size / Cut to Size (1200mm L x 1000mm W)



1. Measure size of the shower area and if required, trim shower tray backer board to size with a stanley knife. Do NOT cut 1 side only, Take care to ensure the drainage hole remains central located / at ideal location.
2. Place shower tray into position mark hole for drainage trap. Cut flooring to accommodate drainage pipework and trap.
3. Connect waste trap to 40mm waste pipe via solvent weld joint. NOTE, plywood subfloor should be 10mm higher than drainage waste trap body to ensure smooth connection later. (Always check for leaks before final installation of shower tray). Place O-ring on top.
4. Fix a batten below the top of the joists.
5. Once you are satisfied with the drainage, replace the plywood section around the drain and fix all floor infills in position. NOTE. NON STRUCTURAL, DO NOT INSTALL DIRECTLY TO JOISTS. FLOOR BOARDS OR PLYWOOD SUB FLOOR REQUIRED.
6. Spread the adhesive evenly over the area where the shower tray is to be installed, being carefully to clean away any adhesive on the rim of the trap.



7. Ensure the board is level & plumb. Ensure the pre-fitted plastic drain in the shower tray aligns with the waste trap in the subfloor. Use the connection ring & rotation key to align. Do not overtighten.
8. Fix the shower tray into position. With a spirit level, check that the edges of the tray are level. Use waterproof membrane to connect all joints and wall corners.
9. Seal all joints (both wall and floor) with membrane & tanking solution.
10. Seal all corners of shower area by internal corners & tanking solution.
11. Now you can tighten fully using the rotation key.



13. Use the riser piece to balance the height difference between tile and drain.
14. The shower base is finished and can be tiled. Once complete replace the rotation key with the basket and cover.



In principle, you can use all types and sizes of tiles, special requirements for tiles from mosaic to larger tiles.

