

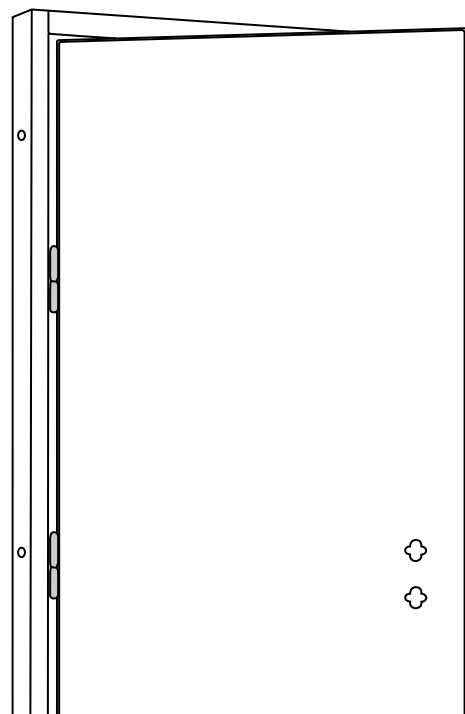
INSTRUCTIONS

Steel Personnel Pedestrian Door to fit 840mm x 2035mm opening

THIS IS **WHOLESALE** .CO.UK

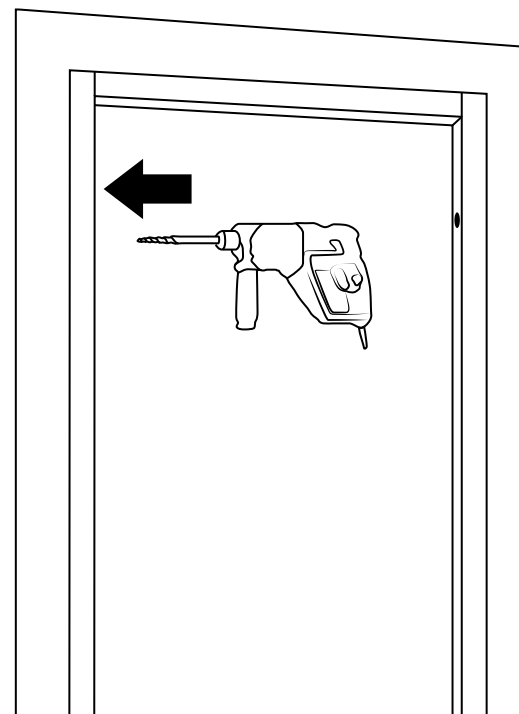
6pm CUT OFF TIME.
NEXT DAY DELIVERY.
10% TRADE DISCOUNT

1



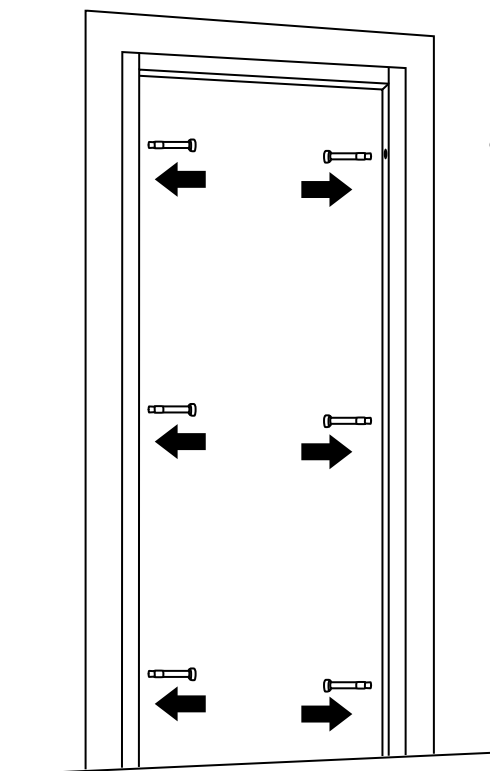
Fit door in the hole hinged in the correct orientation (NOTE door is universal, ie. can be fitted hinged on the left or right, just rotate 180° to so hinged on the opposite side).

2



Once door is square & firmly in position, using the pre-drilled tabs, mark fixing positions on the building lining/frame & drill using suitable drill bit.

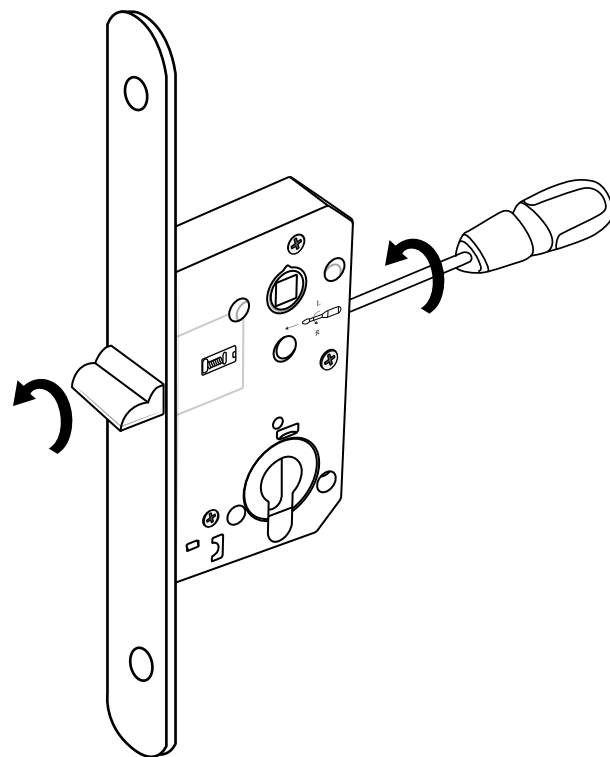
3



Use anchor bolts or suitable frame fixings to secure in place (washers are advised) . NOTE - due to various types of frame being installed into ie. brick, metal, timber, we are unable to supply the door with fixings.

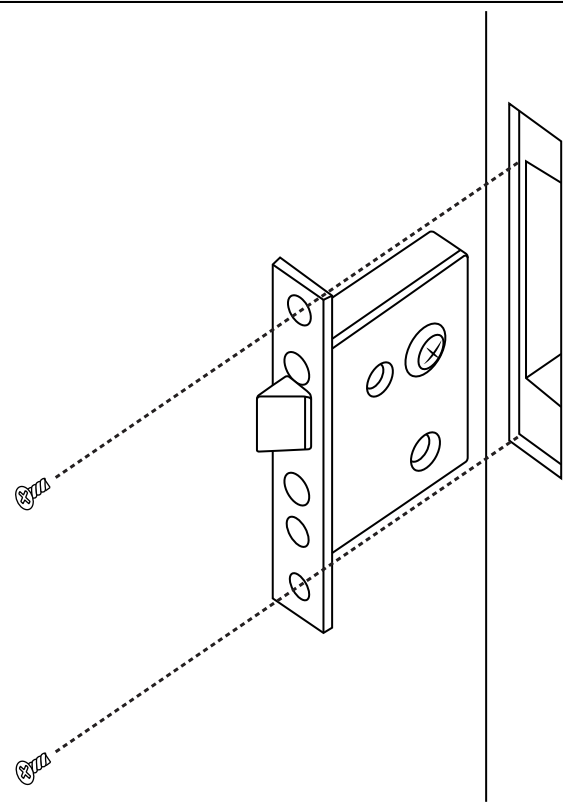
Optional: if ordered the extra add on vanity trim tot cover any caps/voids, this can be fitted on the opposite side & secured with suitable adhesive /mastic.

4



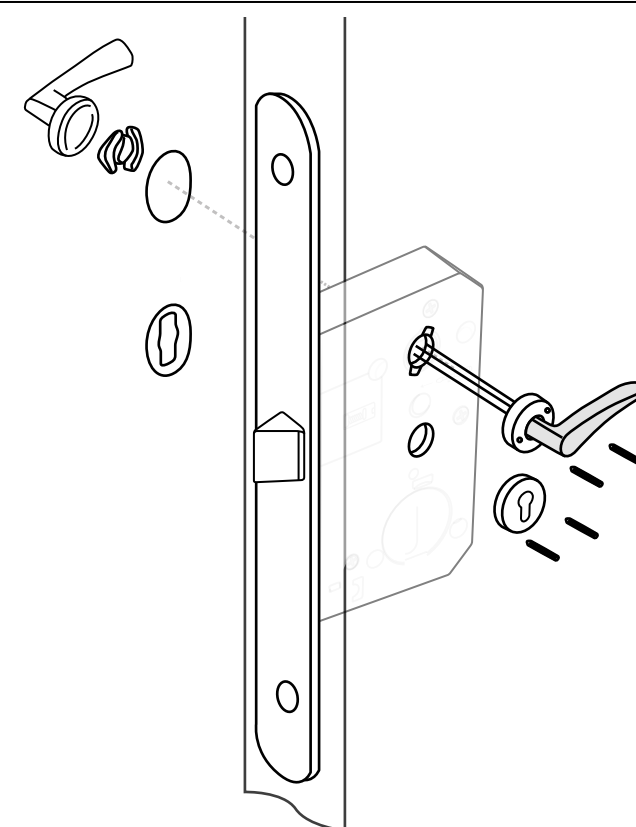
The lock mechanism latch can now be rotated to suit your configuration ie. hinged left side or hinged right side using a screwdriver as shown.

5



Insert the lock mechanism cassette into the door & secure with the 2 x M5 screws as shown.

6



The lock barrel is fitted with with thumb turn from the inside / key insert to the outside. Handle & cover plate secured with screws as shown.

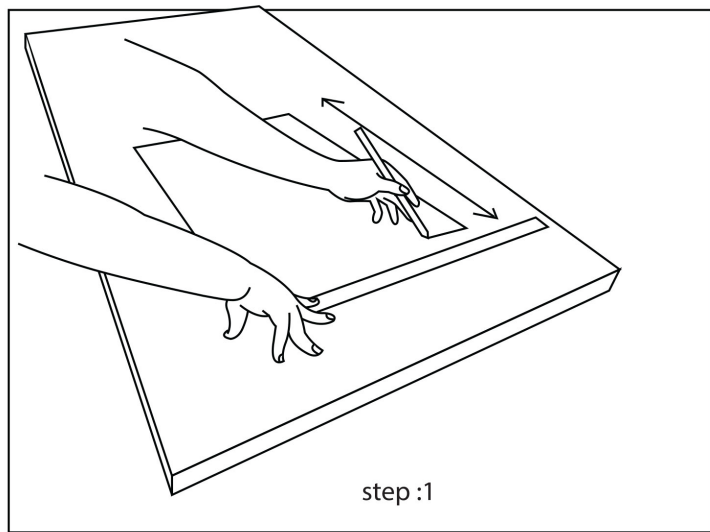
INSTRUCTIONS

THIS IS **WHOLESALE** .CO.UK

6pm CUT OFF TIME.
NEXT DAY DELIVERY.
10% TRADE DISCOUNT

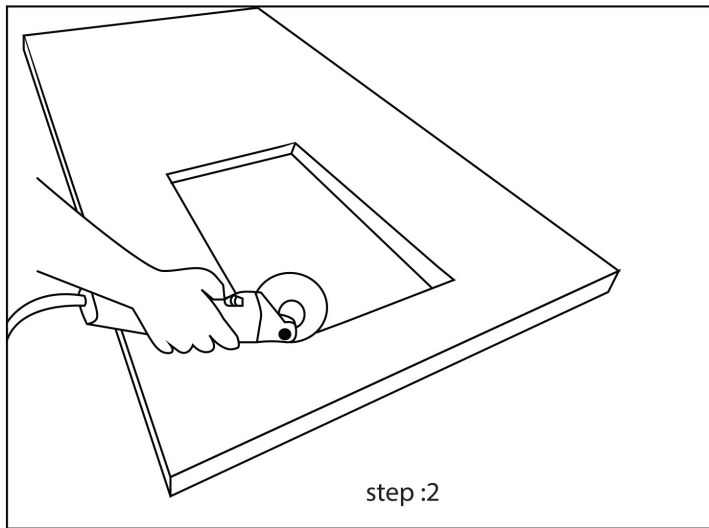
LOUVRE VENT / WINDOW VISION PANEL INSTALLATION

1



Lay door on a flat stable surface taking care not to scratch or damage the door. Mark out the cut with a pencil in the desired position using a straight edge & pencil . Note, 150mm clearance must be left around all 4 sides of the door. You can use the internal measurement of the vent/window frame as a template to draw around.

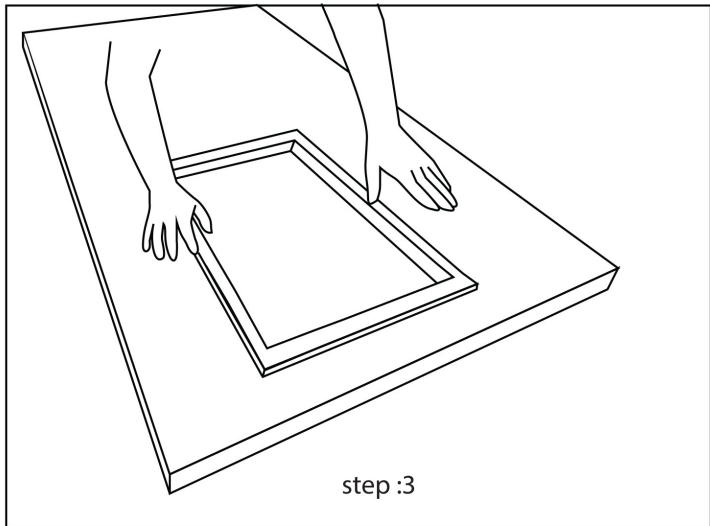
2



OPTIONAL: drill 4 corners through both faces of the door to ensure alignment before cutting.

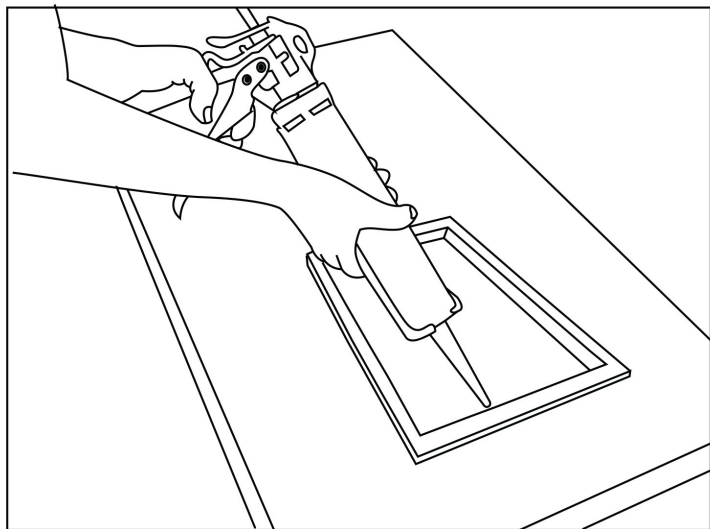
Using angle grinder (or similar metal cutting device) cut the marking on both sides. Ensure to follow a tight line and file off any sharp edges.

3



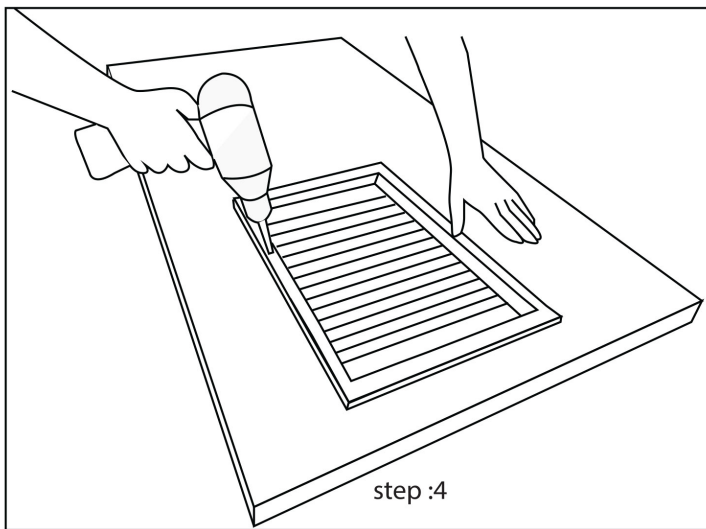
Insert window or louvre vent frame on both sides and check snug fit. If need to recut accordingly. Once satisfied with the aperture, begin if the EXTERNAL FACE first.

4



Place small silicone bead front both sides and top only. Insert frame pre-fitted with glass / louvre vent first to the external face. Apply adhesive tape to hold in position.

5



Turn door over, holding the window/vent frame in place. Apply silicone bead as step 4, insert frame and clip into position & fix using the self tapping/drilling screws provided. Wipe off any excess silicone.