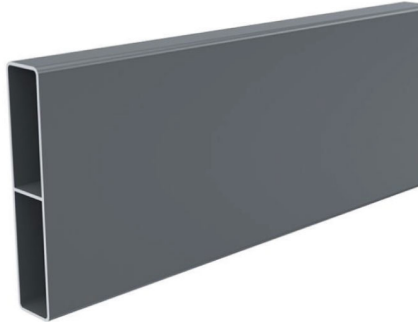


Aluminium Fencing Slats 50mm/100mm x 20mm x 6ft (1770mm) - Black / Anthracite Grey for Aluminium Slatted Fencing

~~£21.60~~ **£12.00**



**Anthracite Grey or Black
Powder Coated**

To order the [complete aluminium slatted fencing kit in 3ft, 4ft, 5ft & 6ft high panels](#), click here



[REGISTERED OFFICE ONLY]

The Levels

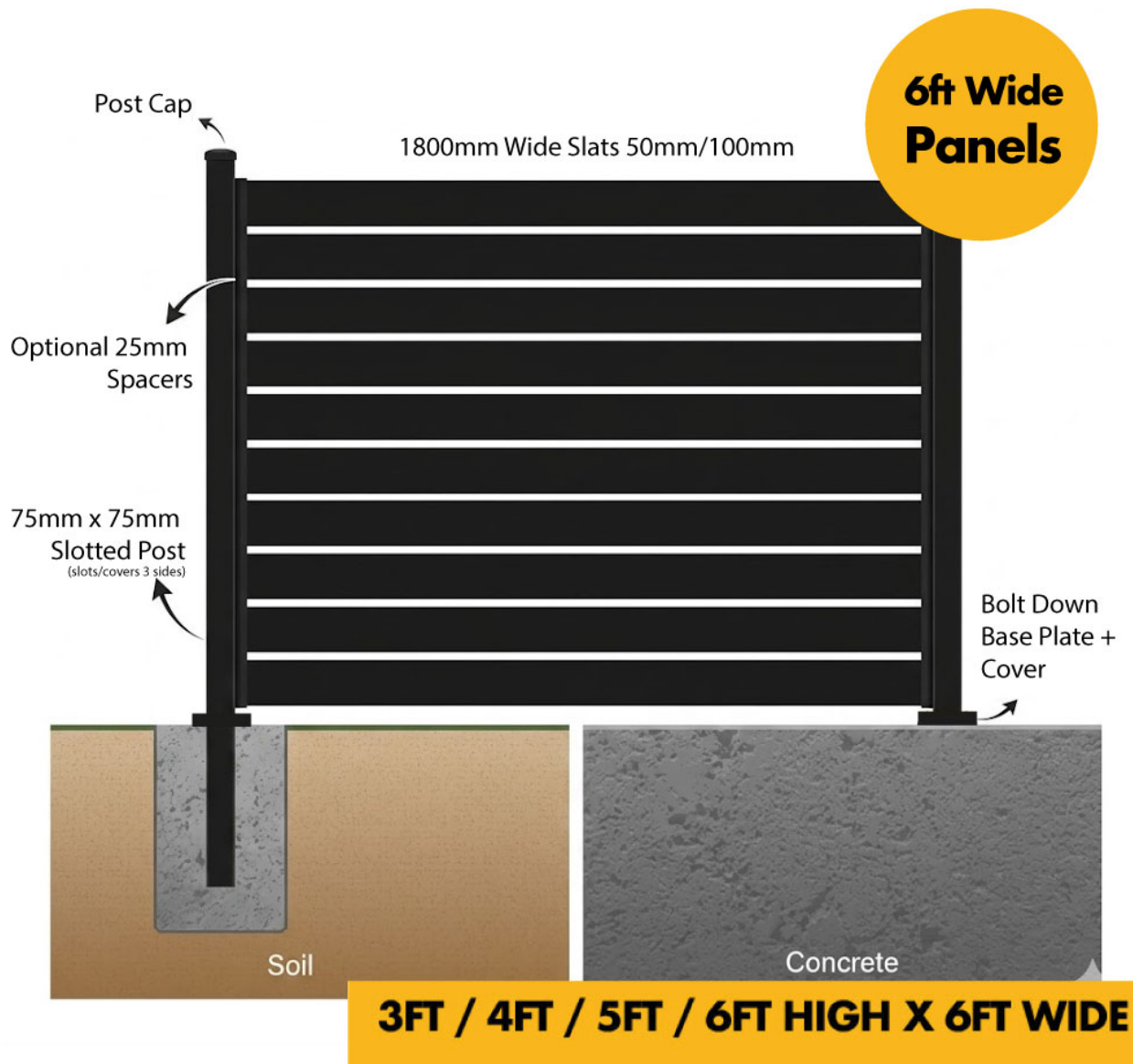
Capital Business Park

Cardiff

CF3 2PX

text_phone 02920 099 098

sales@thisiswholesale.co.uk | <https://www.thisiswholesale.co.uk/>



[Long lasting, Maintenance Free Aluminum Fencing] Alternative to traditional timber fence panels which (no need to stain or seal) & Mould / moisture resistant & splinter resistant)

[Double sided/Reversible Slats - Powder Coated Black/Anthracite Grey] Gives that modern clean look on both sides of the fence whether split between a neighbour or creating a garden screen/balcony surround - aluminum slats fencing will be sure to look great from any angle

[Easy to install Pre-cut slats 6ft Wide] 6ft /1800mm wide 50mm/100mm aluminium fencing slats simply drop and slot in between the aluminium upright post channels, locking into place on top of one another - no need for exposed screws or nail heads giving a clean, minimalist look. Whats more, create a sleek unique design by varying the slats ie. 10 rows of 100mm slats finished by 3 x 50mm slats on the top level.

[Black Aluminium Posts for Surface Fixing or Concreting in] Supplied complete with matt Black powder coated aluminium posts with

options of base plate for surface fixing onto existing floors such as concrete, patios, decks OR longer posts for concreting straight in/sunk in the ground (2300mm for 6ft height / 1150mm for 3ft high posts)

text phone 02920 099 098
sales@thisiswholesale.co.uk | https://www.thisiswholesale.co.uk/

Aluminum Fencing Slats Technical Specs

Slat Length: 6ft / 1770mm (gives 1800mm post centres when installed)

Slat Height: 50 or 100mm - select from the kit

Slat Thickness: 20mm reversible both sides

Colour: RAL9005 Black or RAL7016 Anthracite Grey

Each slat weighs approximately 2kg

Fixing post centres 1800mm +/-5mm. For end of run / custom widths, slats can be cut shorter for shorter spans between posts ie. 1500mm

Material: Aluminium

Fire classification of construction products: BS EN 13501-1 Class B

Black Aluminium Upright posts technical specs

Size: 75mm x 75mm x various heights - 900mm / 1200mm / 1500mm / 1800mm / 2400mm for surface fixing with base plate or 1200mm / 1500mm / 1800mm / 2400mm for concrete in (300mm - 600mm below ground respectively)

Colour: Matt Black Powder Coated comes complete with PVC plastic post top cap

c/w channels on 3 sides for continuous inline fencing or 90° corner + 1 infill trim for the unused groove per post

Can be cut with a mitre/chop saw to the desired height should you opt for a custom height fence ie. 600mm to fix on to existing wall

If above ground/surface fixing, comes with a 120mm x 120mm base plate, PVC plastic base plate cover , 1 x self drilling screw

If below ground/concrete in - 2300mm post for 1800mm above ground / 500mm below.

Per 1800mm section/panel you will get:

**Specified x aluminium fencing slats 50mm/100mm x 1800mm x 20mm
1 x aluminium extruded fence posts + 2 infill trim**

*****1 x END POST IF YOU SELECT THE ADD ON END POST**

1 PVC post cap

*****1 x 120mm x 120mm surface mount plate if above ground installation selected**

text: 01920 099 098
sales@thisiswholesale.co.uk | <https://www.thisiswholesale.co.uk/>

[**DOWNLOAD INSTALLATION INSTRUCTIONS / MANUAL**](#)