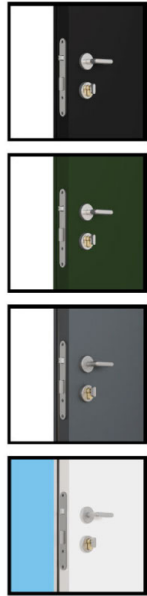
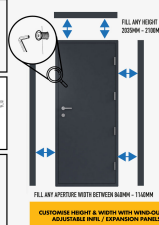
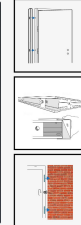


# Shipping Container Steel Doors - Single Security Personnel Doors for 20ft / 40ft ISO Shipping Container - Industrial Grade Exterior Outdoor Security Door

**£229.00**



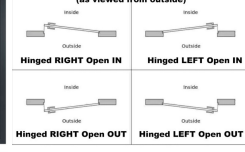
## SHIPPING CONTAINER DOORS



### OPTIONAL ADD ONS



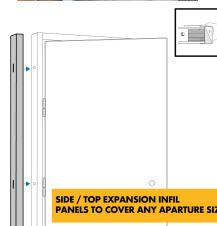
### Select your door preference at checkout in the notes (as viewed from outside)



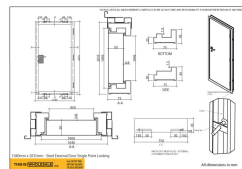
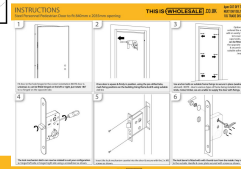
Pre-installed Fixing Tabs x 4 On Both Sides for Ease of Install

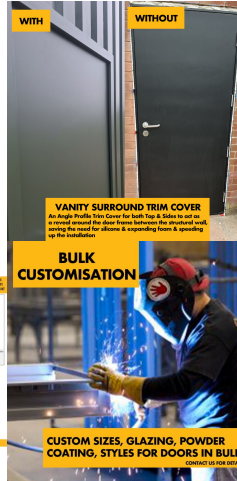
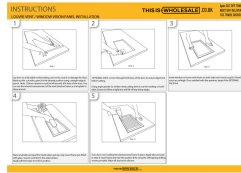
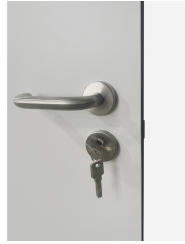
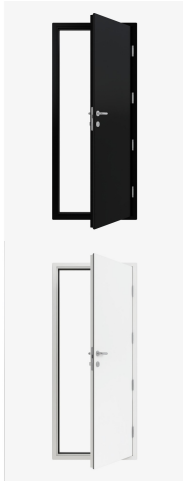


Side & Top Frame Extenders (Wind out to suit any opening)



SIDE / TOP EXPANSION INFL PANELS TO COVER ANY APARTURE SIZE





**Looking for ungraded Ultra High Security / heavy Duty Steel doors with 12 Point / Multi point Locking?**

**THIS IS  WHOLESALE**

**STEEL SECURITY  
PERSONNEL  
PEDESTRIAN  
DOOR**





## 5 COLOURS & 3 SIZES UK STOCK AVAILABLE

- RAL 9003 WHITE
- RAL 7016 ANTHRACITE GREY
- RAL 9005 JET BLACK
- RAL 6007 JUNIPER GREEN
- RAL 5005 SIGNAL BLUE

Powder coated both in & out.

-840mm W x 2035mm H

-940mm W x 2035mm H

-1040mm W x 2035mm H

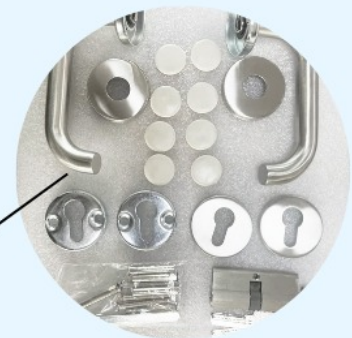
## SPECIFICATION SHEET

<b>Door Frame Material</b>	1.5mm Galvanised Steel
<b>Door Frame Thickness</b>	90mm
<b>Door Leaf Material</b>	Double skinned 0.7mm galvanised steel
<b>Door Leaf Thickness</b>	45mm
<b>Clear Opening Size</b>	1995mm H x 750mm/850mm/950mm W
<b>U Value</b>	1.6w/m <sup>2</sup> k (50mm Mineral Wool Insulation)
<b>Acoustic Value</b>	32dBa
<b>Hinges</b>	4 Stainless steel hinges
<b>Weather Seal</b>	Full weather seal to all 4 sides of the frame
<b>Hole Cut Out Size</b>	2035mm H x 840/940/1040mm W





4 x heavy duty hinges that offer extra security



Full set of stainless steel handle & lock



3 sets of keys, single point locking mechanism





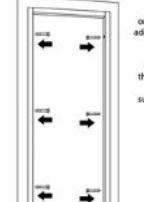
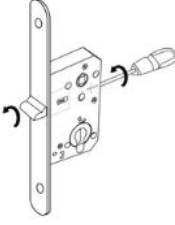
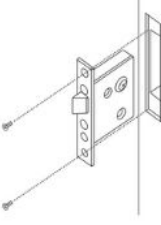
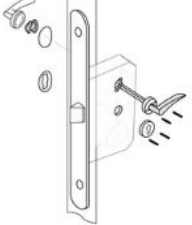
Full weather seal to all 4 sides of the frame

**INSTRUCTIONS**

Steel Personnel Pedestrian Door to fit 840mm x 2035mm opening

**THIS IS WHOLESALE .CO.UK**

4pm CUT OFF TIME.  
NEXT DAY DELIVERY.  
10% TRADE DISCOUNT

<p><b>1</b></p>  <p>Fit door in the hole hinged in the correct orientation (NOTE door is universal, i.e. can be fitted hinged on the left or right, just rotate 180° to so hinged on the opposite side).</p>	<p><b>2</b></p>  <p>Once door is square &amp; firmly in position, using the pre-drilled tabs, mark fixing positions on the building lining/frame &amp; drill using suitable drill bit.</p>	<p><b>3</b></p>  <p>Use anchor bolts or suitable frame fixings to secure in place (washers are advised). NOTE - due to various types of frame being installed into i.e. brick, metal, timber, we are unable to supply the door with fixings.</p> <p>Optional: if ordered the extra add on vanity trim (not cover any caps/rods), this can be fitted on the opposite side &amp; secured with suitable adhesive /mastic.</p>
<p><b>4</b></p>  <p>The lock mechanism latch can now be rotated to suit your configuration i.e. hinged left side or hinged right side using a screwdriver as shown.</p>	<p><b>5</b></p>  <p>Insert the lock mechanism cassette into the door &amp; secure with the 2 x M5 screws as shown.</p>	<p><b>6</b></p>  <p>The lock barrel is fitted with with thumb turn from the inside / key insert to the outside. Handle &amp; cover plate secured with screws as shown.</p>

**UNIVERSALLY HINGED LEFT OR RIGHT**

Simply rotate the door 180° to hinge on the opposite side. Hinged side you can select at the point of installation depending on the orientation of the install.

## **BOTH IN & OUT POWDER COATING IN 5 DIFFERENT COLOURS**

**RAL 7016 Grey**



**RAL 9003 White**



**RAL 9005 Black**



**RAL 6007 Green**



**RAL 5005 Blue**



## OPTIONAL WINDOW/LOUVRE VENT



Square Vision Panel Window  
Double glass 400\*400mm



Linear Vision Panel Window  
Double glass 220\*1500mm



Louvre Vent  
500\*300mm

**Note this is a door prehung in a hollow frame only. To fix to the container side wall you would require to weld in a goal post box section frame in the container wall itself allowing you to fix the door frame inside.**

**UNIVERSALLY HINGED LEFT OR RIGHT. SIMPLY ROTATE THE DOOR 180° TO HINGE ON THE OPPOSITE SIDE. SIMPLY SELECT OPEN IN OUR OUT. HINGED SIDE YOU CAN SELECT AT THE POINT OF INSTALLATION DEPENDING ON THE ORIENTATION OF THE INSTALL.**

Can I use these doors as a fire exit? Our lockable external doors & lock sets are key lockable from the outside & thumb-turn release from the inside and thus a widely acceptable method of escape being defined as 'easily and immediately opened by any person in an emergency situation.' Some people assume that only doors with panic hardware/handles are acceptable - hence its advisable to check with your local building control officer **BEFORE** purchasing if you need clarification. Note - a fire exit door must open in the direction of passage/travel and thus in most cases open **OUTWARDS**.

Steel security door for outdoor/external use - industrial-grade personnel door is the ideal Security Door for Garage, Warehouse, Shed, Industrial Unit, Shipping Container, Farm Barn - can be primed & painted any colour yourself) complete with outer frame, & optional stainless steel door handle & lock with internal thumb turn & 3 sets of keys, single point locking mechanism). **OPTIONAL POWDER COATED COLOURS (AT EXTRA COST)**

- RAL 9003 WHITE (painted both sides in/out)
- RAL 7016 ANTHRACITE GREY (painted both sides in/out)
- RAL 9005 JET BLACK (painted both sides in/out)
- RAL 6007 JUNIPER GREEN (painted both sides in/out)

PLEASE NOTE - THIS IS ONE STANDARD SIZED 2035mm h x 840mm / 940mm / 1040mm wide - ITEM IS RECOMMENDED TO BE

MEASURED, ORDERED AND INSTALLED BY A SUITABLE EXPERIENCED PROFESSIONAL AS WE DO NOT TAKE ANY LIABILITY FOR INCORRECT MEASUREMENTS. FULL TECHNICAL DRAWING WITH ALL DIMENSIONS IS BELOW & INSTALLATION INSTRUCTIONS.

FOR CUSTOM SIZES, PLEASE SEE OUR SIDE EXPANSION / EXTENSION PANELS THAT COME WITH WIND OUT LUGS ALLOWING EXTENSION OF BOTH SIDES AND HEADER SECTION FROM 10MM -100MM, THUS MAKING THIS DOOR SUITABLE FOR ALL SIZED APERTURES FROM 840MM TO 1140MM WIDTH AND 2035MM TO 2090MM H. FUTHER CUSTOM SIZES MADE ON REQUEST. CONTACT US FOR A QUOTE

Stock Door Size	+ 35mm Side Panel	+ 55mm Side Panel	+ 35mm Header Panel	+ 55mm Header Panel	+ 75mm Header Panel
840mm x 2035	840mm - 890mm	890mm - 940mm	2035mm - 2070mm	2070mm - 2090mm	2090mm - 2105mm
940mm x 2035	940mm - 990mm	990mm - 1040mm	2035mm - 2070mm	2070mm - 2090mm	2090mm - 2105mm
1040mm x 2035	1040mm - 1090mm	1090mm - 1140mm	2035mm - 2070mm	2070mm - 2090mm	2090mm - 2105mm

*Optional Add on 500mm x 300mm Louvre Vent or 400mm x 400mm / 220mm x 1500mm Vision Panels - SELF INSTALLATION / CUTTING REQUIRED (these are supplied with the door only for the customer to install) see instructions below for details. This add on is not pre-installed by ourselves and is only supplied with the door for the customer / installer to fit. Requires a competent and experienced installer, we accept no liability for mis-installation / mis-cutting or damage to product during installation. Frame powder coated both sides and will be sent the same colour as the door selected. Note, 150mm clearance must be left around all 4 sides of the door.*

**Weight: 840mm 46kg / 940mm 49kg / 1040mm 52kg**

[DOWNLOAD PDF TECHNICAL DRAWING / DIMENSIONS](#)

**[DOWNLOAD STEEL DOOR INSTALLATION INSTRUCTIONS / MANUAL](#)**

**[DOWNLOAD INSTRUCTIONS MANUAL FOR SIDE/HEADER EXPANSION INFIL PANELS](#)**

[DOWNLOAD VISION GLASS PANEL / LOUVRE VENT INSTRUCTIONS](#)

**[DOWNLOAD FIRE EXIT PUSH PAD/BAR + OUTSIDE ACCESS DEVICE INSTRUCTIONS](#)**

**[DOWNLOAD FIRE EXIT PUSH PAD/BAR + EXTERNAL BLANK INSTRUCTIONS](#)**

**[DOWNLOAD DOOR EXTERNAL BLANK / BLANKING PLATE INSTRUCTIONS](#)**

**[DOWNLOAD COMBINATION CODE HANDLE LOCK INSTALLATION INSTRUCTIONS](#)**

[DOWNLOAD HIGH SECURITY MULTI-POINT LOCKING INC. PAS24 & FIRE RATED STEEL DOOR INSTALLATION INSTRUCTIONS](#)

[DOWNLOAD WC VACANT/ENGAGED CONVERSION KIT INSTALLATION INSTRUCTIONS](#)

**[DOWNLOAD MAINTENANCE MANUAL](#)**

840mm / 940mm / 1040mm x 2035mm outer dimensions ie. to fit 840mm x 2035mm cut out (clear opening 750mm/850mm/950mm) - door frame thickness 75mm / door leaf thickness 45mm. Actual Door Size: 1943mm H x 750mm/850mm/950mm W - comes pre-hung in frame and fixing points located around the frame for easy install with the correct screws/fixings (not supplied) into brick, timber, steel or other building material. We recommend adding 5-10mm to the external size about for fitting which can be filled with foam / silicone. We would recommend adding a rain drip to any inward opening doors being installed externally helping to prevent water ingress. Frame features knock out weep holes at external footer.

**What is a vanity surround trim?**

When you install the door, you will inevitably get a small gap between say the block work or timber and the steel frame of the door on the reveal. This can be filled with silicone or expanding foam etc. The Vanity surround trim cover as a 3 pc kit of Angled steel (the same material + powder coated the same colour as the door) which is inserted between wall and door and fixed, using the return edge to essentially hide or make good this gap, thus removing the need for silicone etc. to tidy up this edge. This is an optional aesthetic part, supplied in 3 pcs (ie. 2 legs, 1 header) which you can custom cut to size to suit your installation (note - we recommend cutting the header piece to size first, then inserting the legs to get a clean edge. The legs should cut cut to size at ground level.

WE STOCK ALL: CONFIGURATIONS OF DOOR OPENING INWARDS OR OUTWARDS, AS VIEWED FROM OUTSIDE- Doors are universal and can be fitted with hinges either on the left or the right hand as viewed from outside by rotating the pre-latch mechanism,- SEE IMAGE FOR FURTHER DETAILS ON CONFIGURATIONS WHEN SELECTING YOUR VARIATION OF DOOR AS INCORRECT ORDERS/RETURNS MUST BE RETURNED AT BUYERS COST. IF IN DOUBT PLEASE ASK.

Door Frame Material	<i>1.5mm Galvanised Steel</i>
Door Frame Thickness	<i>90mm</i>
Door Leaf Material	<i>Double skinned 0.7mm galvanised steel</i>
Door Leaf Thickness	<i>45mm</i>
Door Leaf Core	<i>50mm Mineral Wool Insulation</i>
Actual Door Size	<i>1943mm x 750mm/850mm/950mm</i>
U Value	<i>1.6 w/m<sup>2</sup>k (50mm Mineral Wool Insulation)</i>
Acoustic Value	<i>32dBa</i>
Hinges	<i>4 Stainless steel hinges</i>

Lock *Eurocylinder*  
Cylinder *70mm (35 - 35)*

- *NOTE: due to manufacturing tolerances with regards to batch variation, we recommend ordering all coloured/powder coated doors for a project at the same time, from the same batch as we cannot be held responsible for any variation that occurs between batches.*
- *Must be installed by a competent persons, we are not able to train, teach any DIY enthusiast how to fit a door correctly. Whilst its not a difficult job, each individuals competency and skill set varies and thus professional knowledge is advised to fit this product correctly, safely and securely for normal operation.*
- *Note - door includes mechanical / moving parts such as lock mechanism, hinges, latches and as such requires regular maintenance and upkeep ion the form of regular lubrication/oil applying.*