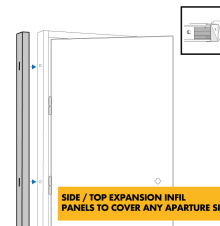
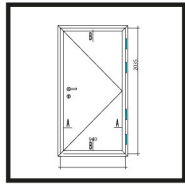


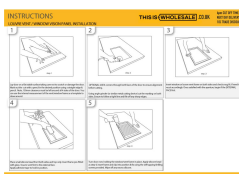
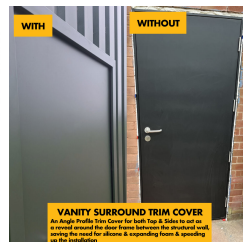
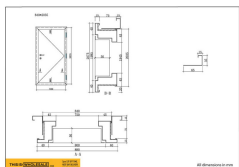
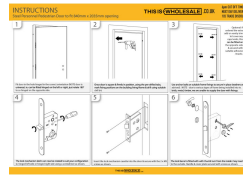
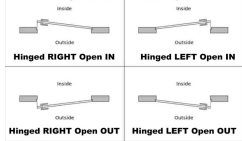
**\*\*CLEARANCE\*\* High Security Steel Security Door- 9 Point/Multi Point Locking - Ultra Heavy Duty External Industrial Grade Exterior Outdoor Security Door**

**£357.00 £239.00**



**HIGH SECURITY STEEL DOOR  
9 POINT LOCKING**

Select your door preference at checkout in the notes (as viewed from outside)



CLEARANCE / END OF LINE DISCONTINUED MODEL - LIMITED STOCK AVAILABLE

[Looking for Economy Steel External Doors? Click Here](#)

text\_phone 02920 099 098  
sales@thisiswholesale.co.uk | <https://www.thisiswholesale.co.uk/>

**THIS IS  WHOLESALE**

**HIGH SECURITY  
PERSONNEL  
PEDESTRIAN  
DOOR**





## 5 COLOURS & 3 SIZES UK STOCK AVAILABLE

- RAL 9003 WHITE
- RAL 7016 ANTHRACITE GREY
- RAL 9005 JET BLACK
- RAL 6007 JUNIPER GREEN
- RAL 5005 SIGNAL BLUE

Powder coated both in & out.

-840mm W x 2035mm H

-940mm W x 2035mm H

-1040mm W x 2035mm H





[REGISTERED OFFICE ONLY]

The Levels

Capital Business Park

Cardiff

CF3 2PX

text\_phone 02920 099 098

sales@thisiswholesale.co.uk | <https://www.thisiswholesale.co.uk/>

## SPECIFICATION SHEET

<b>Door Frame Material</b>	1.8mm Galvanised Steel
<b>Door Frame Thickness</b>	90mm
<b>Door Leaf Material</b>	Double skinned 0.8mm galvanised steel
<b>Door Leaf Thickness</b>	45mm
<b>Clear Opening Size</b>	1995mm H x 750mm/850mm/950mm W
<b>U Value</b>	1.6w/m <sup>2</sup> k (50mm Mineral Wool Insulation)
<b>Acoustic Value</b>	32dBa
<b>Hinges</b>	4 Stainless steel hinges
<b>Weather Seal</b>	Full weather seal to all 4 sides of the frame
<b>Hole Cut Out Size</b>	2035mm H x 840/940/1040mm W





[REGISTERED OFFICE ONLY]

The Levels

Capital Business Park

Cardiff

CF3 2PX

text\_phone 02920 099 098

sales@thisiswholesale.co.uk | <https://www.thisiswholesale.co.uk/>



Stainless steel  
handle & two  
locking system

Full key sets &  
handles



**INSTRUCTIONS**

Steel Personnel Pedestrian Door to fit 840mm x 2035mm opening

**THIS IS WHOLESALE .CO.UK**

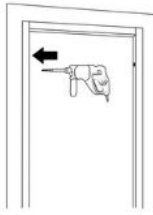
6pm CUT OFF TIME.  
 NEXT DAY DELIVERY.  
 10% TRADE DISCOUNT

1



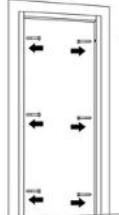
Fit door in the hole hinged in the correct orientation (NOTE door is universal, i.e. can be fitted hinged on the left or right, just rotate 180° to so hinged on the opposite side).

2



Once door is square & firmly in position, using the pre-drilled tabs, mark fixing positions on the building lining/frame & drill using suitable drill bit.

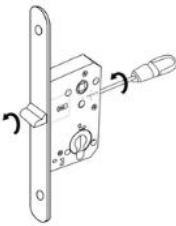
3



Use anchor bolts or suitable frame fixings to secure in place (washers are advised). NOTE - due to various types of frame being installed into i.e. brick, metal, timber, we are unable to supply the door with fixings.

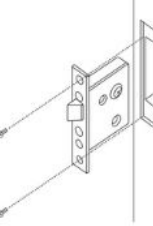
Optional: if ordered the extra add on vanity trim (to cover any caps/rods), this can be fitted on the opposite side & secured with suitable adhesive /mastic.

4



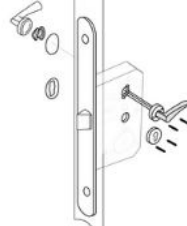
The lock mechanism latch can now be rotated to suit your configuration i.e. hinged left side or hinged right side using a screwdriver as shown.

5



Insert the lock mechanism cassette into the door & secure with the 2 x M5 screws as shown.

6



The lock barrel is fitted with with thumb turn from the inside / key insert to the outside. Handle & cover plate secured with screws as shown.

**THIS IS WHOLESALE**

**UNIVERSALLY  
 HINGED LEFT OR  
 RIGHT**

Simply rotate the door 180° to hinge on the opposite side. Hinged side you can select at the point of installation depending on the orientation of the install.

**BOTH IN & OUT POWDER COATING IN 5 DIFFERENT COLOURS**

**RAL 7016 Grey**



**RAL 9003 White**





Ultra High Security / Heavy Duty Steel security door (9 point multi point Locking) for outdoor/exterior use - industrial-grade personnel door is the ideal Security Door for Garage, Warehouse, Shed, Industrial Unit, Shipping Container, Farm Barn - can be primed & painted any colour yourself) complete with outer frame, & stainless steel door handle & lock with internal thumb turn & 3 sets of keys, 9 point multi point locking mechanism). OPTIONAL POWDER COATED COLOURS (AT EXTRA COST)

- RAL 9003 WHITE (painted both sides in/out)
- RAL 7016 ANTHRACITE GREY (painted both sides in/out)
- RAL 9005 JET BLACK (painted both sides in/out)

[DOWNLOAD PDF TECHNICAL DRAWING / DIMENSIONS](#)

[DOWNLOAD STEEL DOOR INSTALLATION INSTRUCTIONS / MANUAL](#)

[DOWNLOAD INSTRUCTIONS MANUAL FOR SIDE/HEADER EXPANSION INFIL PANELS](#)

[DOWNLOAD VISION GLASS PANEL / LOUVRE VENT INSTRUCTIONS](#)

[DOWNLOAD FIRE EXIT PUSH PAD/BAR + OUTSIDE ACCESS DEVICE INSTRUCTIONS](#)

[DOWNLOAD FIRE EXIT PUSH PAD/BAR + EXTERNAL BLANK INSTRUCTIONS](#)

[DOWNLOAD DOOR EXTERNAL BLANK / BLANKING PLATE INSTRUCTIONS](#)

[DOWNLOAD COMBINATION CODE HANDLE LOCK INSTALLATION INSTRUCTIONS](#)

[DOWNLOAD HIGH SECURITY MULTI-POINT LOCKING INC. PAS24 & FIRE RATED STEEL DOOR INSTALLATION INSTRUCTIONS](#)

[DOWNLOAD WC VACANT/ENGAGED CONVERSION KIT INSTALLATION INSTRUCTIONS](#)

**DOWNLOAD MAINTENANCE MANUAL**

**PLEASE NOTE - STOCK STANDARD SIZED 2035mm h x 840mm/940mm/1040mm w. For any sizes in between 840mm - 1140mm, we stock expansion infil panels which simply clip on the side of the door and wind out with an allen key to fill desired gap. 2 sizes available depending on the size of the gap - see selection table for assistance to make any stock door fit a custom sized aperture. 35mm or 55mm side / top expansion infil panels can be added to fit any aperture from 840mm - 1140mm / 2035mm h - 2090mm h. See table below for details & instructions**

Stock Door Size	+ 35mm Side Panel	+ 55mm Side Panel	+ 35mm Header Panel	+ 55mm Header Panel	+ 75mm Header Panel
840mm x 2035	840mm - 890mm	890mm - 940mm	2035mm - 2070mm	2070mm - 2090mm	2090mm - 2105mm
940mm x 2035	940mm - 990mm	990mm - 1040mm	2035mm - 2070mm	2070mm - 2090mm	2090mm - 2105mm
1040mm x 2035	1040mm - 1090mm	1090mm - 1140mm	2035mm - 2070mm	2070mm - 2090mm	2090mm - 2105mm

**Infil panel selection table to suit any aperture ie. if you have an aperture 900mm w x 2070mm h, select the 840mm door + 55mm side panel to make 900mm width. Then select the 35mm header panel to increase height from standard 2035mm h to 2070mm.**

*Optional Add on 500mm x 300mm Louvre Vent or 400mm x 400mm / 220mm x 1500mm Vision Panels - SELF INSTALLATION / CUTTING REQUIRED (these are supplied with the door only for the customer to install) see instructions below for details. This add on is not pre-installed by ourselves and is only supplied with the door for the customer / installer to fit. Requires a competent and experienced installer, we accept no liability for mis-installation / mis-cutting or damage to product during installation. Frame powder coated both sides and will be sent the same colour as the door selected. Note, 150mm clearance must be left around all 4 sides of the door.*

840mm x 2035mm outer dimensions ie. to fit 840mm x 2035mm cut out (clear opening 750mm) - door frame thickness 90mm / door leaf thickness 45mm. Actual Door Size: 1995mm H x 800mm W - comes pre-hung in frame and fixing points located around the frame for easy install with the correct screws/fixings (not supplied) into brick, timber, steel or other building material. We recommend adding 5-10mm to the external size about for fitting which can be filled with foam / silicone. We would recommend adding a rain drip to any inward opening doors being installed externally helping to prevent water ingress.

**What is a vanity surround trim?**

When you install the door, you will inevitably get a small gap between say the block work or timber and the steel frame of the door on the reveal. This can be filled with silicone or expanding foam etc. The Vanity surround trim cover as a 3 pc kit of Angled steel (the same material + powder coated the same colour as the door) which is inserted between wall and door and fixed, using the return edge to essentially hide or make good this gap, thus removing the need for silicone etc. to tidy up this edge. This is an optional aesthetic part, supplied in 3 pcs (ie. 2 legs, 1 header) which you can custom cut to size to suit your installation (note - we recommend cutting the header piece to size first, then inserting the legs to get a clean edge. The legs should cut cut to size at ground level.

Door Frame Material *Upgraded 1.8mm Galvanised Steel*

Door Frame Thickness *75mm*

Door Leaf Material *Double skinned 0.8mm galvanised steel*

Door Leaf Thickness	45mm
Door Leaf Core	50mm Mineral Wool Insulation
Actual Door Size	1995mm x 800mm
U Value	2.6
Acoustic Value	32dBa
Hinges	4 Stainless steel ball bearing hinges

Lock *Eurocylinder*  
90mm (45 -  
Cylinder 45)

- *NOTE: due to manufacturing tolerances with regards to batch variation, we recommend ordering all coloured/powder coated doors for a project at the same time, from the same batch as we cannot be held responsible for any variation that occurs between batches.*
- *Must be installed by a competent persons, we are not able to train, teach any DIY enthusiast how to fit a door correctly. Whilst its not a difficult job, each individuals competency and skill set varies and thus professional knowledge is advised to fit this product correctly, safely and securely for normal operation.*
- *Note - door includes mechanical / moving parts such as lock mechanism, hinges, latches and as such requires regular maintenance and upkeep ion the form of regular lubrication/oil applying.*