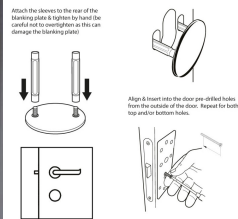


Door Blanking Plate c/w 2 x Screws - for blanking off existing holes on the single point locking steel security door

£10.80



Attach the screws to the rear of the blanking plate to secure to the door. Careful not to over-tighten as this can damage the blanking plate.



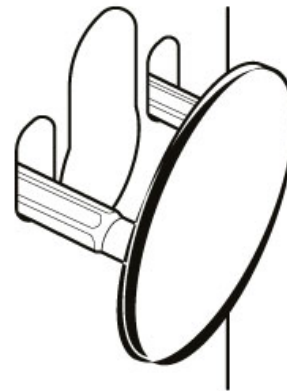
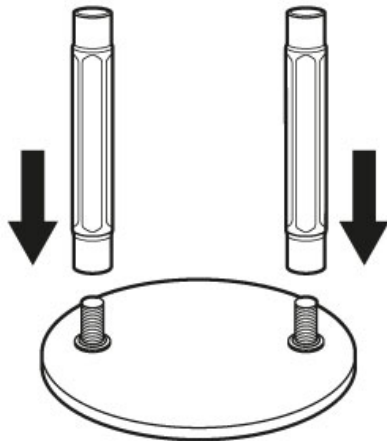
Align & insert into the door pre-drilled holes from the outside of the door. Repeat for both top and/or bottom holes.



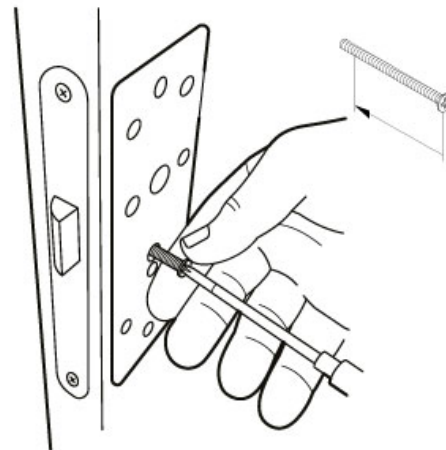
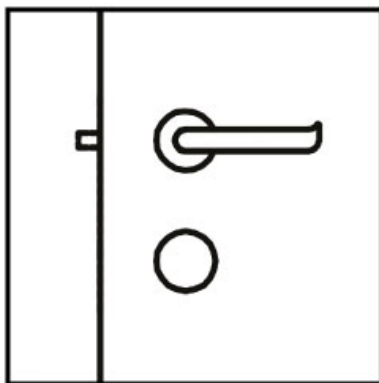
Door Blanking Plate c/w 2 x Screws - for blanking off existing holes on the single point locking steel security door. Used generally when you want to restrict access externally with the pre-punched handle hole and cover with a blanking plate.

Select colour to match door

Attach the sleeves to the rear of the blanking plate & tighten by hand (be careful not to overtighten as this can damage the blanking plate)



Align & Insert into the door pre-drilled holes from the outside of the door. Repeat for both top and/or bottom holes.



[DOWNLOAD FIRE EXIT PUSH PAD/BAR + EXTERNAL BLANK INSTRUCTIONS](#)

[DOWNLOAD FIRE EXTERNAL BLANK / BLANKING PLATE INSTRUCTIONS](#)

Note - supplied as 1 pc ie. for 1 hole 1 side. If blanking BOTH the handle and key lock hole, or if looking to blank off an entire hole you will need 2 sets